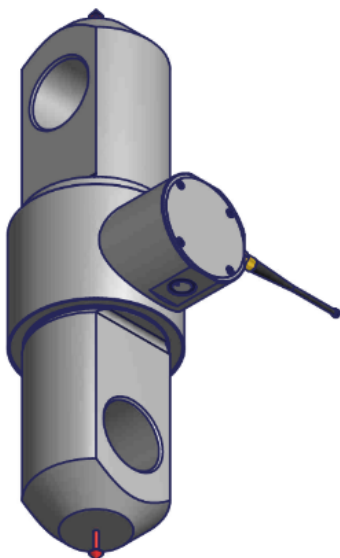


# DIN TXH

## Electronic dynamometer with radio transmission

### 1. Product description

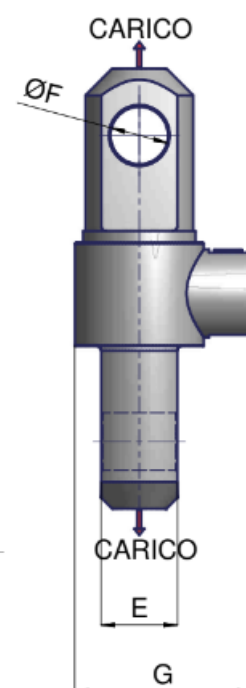
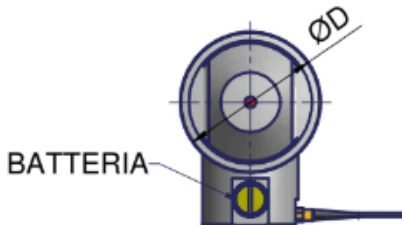
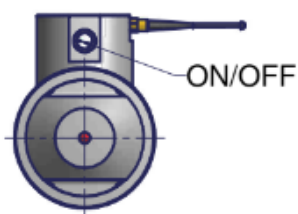
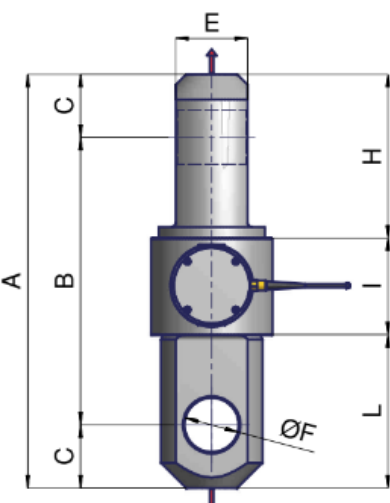


- 1 Capacities from 17t to 100t
- 2 Stainless steel load cell structure
- 3 Stainless steel housing structure
- 4 Protection IP65 (EN 60529)
- 5 Omega shackles on request for all DIN TXH models

### 2. Applications

Electronic dynamometer composed by a stainless steel traction load cell and a welded stainless steel housing designed for weighing suspended loads with radio transmission to the hand receiver instrument model RX DI02 or RX02 PORT with transmission frequencies 433.92 or 868 MHz up to a distance of 50 meters .

### 3. Dimensions (mm.)



Portata t	Divisione	A	B	C	D	E	F	G	H	I	L	Peso
17 t	10 kg	320	230	45	110	57	44	185	100	120	100	15 kg
25 t	20 kg	360	250	55	113	72	52	185	132	108	120	20 kg
35 t	20 kg	460	320	70	113	80	60	185	182	108	170	27 kg
50 t	50 kg	520	350	85	130	103	72	220	201	134	185	48 kg
100 t	50 kg	580	380	100	165	123	85	256	210	180	190	76 kg

# DIN TXH

## Electronic dynamometer with radio transmission

### 3. Product features

Maximum safe load	200% of full scale
Ultimate load	500% of full scale
Operating temperature	-5°C / +55°C
Measurement accuracy	± 0,1% of full scale
Power supply	n°1 battery - Type "C" (autonomy 200 hours)

### 4. Software parameters

Tare zeroing and weight calibration via keyboard

Selectable digital filters

Auto switch off selectable from keyboard

Storage of peak and weight

Measurement unit selection via keyboard (kg-DaN-kN-lb-t)