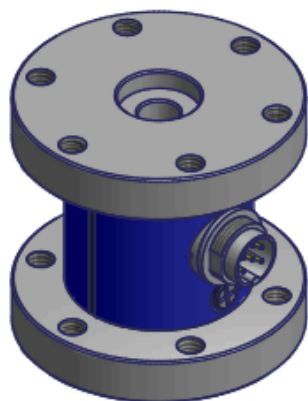


# FLANGE TORQUE TRANSMITTER

## Torque load cell

### 1. Product description

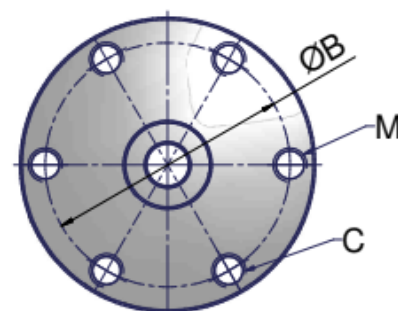
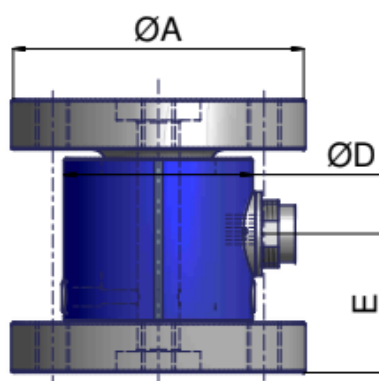
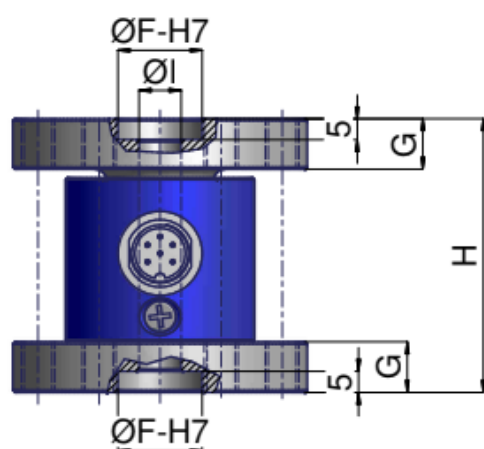


- 1 Capacities from 20 Nm to 5000 Nm
- 2 Stainless steel load cell and aluminium safe-keeping
- 3 Protection IP64 (EN 60529)
- 4 High accuracy
- 5 On request ATEX zona 22 version

### 2. Applications

Flange static torque transmitters are devices created for the reaction wrench rilevation. Made in Stainless Steel, with capacity from 20 Nm to 5000 Nm, they are the ideal solution for monitoring of torque developed by a motor or dissipated by a shock absorber, to prevent the rotation of their structure.

### 3. Dimensions (mm.)



Portata Nm	A	B ±0,2	C	D	E	F	G	H	I	M	Uscita mV	Std	OIML	ATEX
20 - 50 - 100 - 200 Nm	70	58	6 x 60°	45	33	20	12	65	10	M 8	1	✓		✓
500 - 1000 Nm	100	82	8 x 45°	60	40	20	15	80	18	M 10	1	✓		✓
2000 - 5000 Nm	130	100	12 x 30°	86	45	75	20	100	20	M 12	1	✓		✓

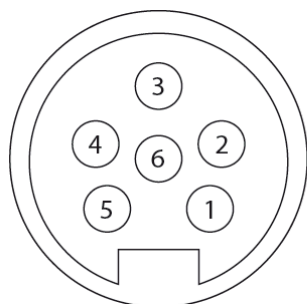
# FLANGE TORQUE TRANSMITTER

## Torque load cell

### 4. Product features

Accuracy class	Standard
Capacities fs (Emax)	20÷5000 Nm
Rated output (Cn)	1 mV/V $\pm$ 0,5%
Nominal excitation range	5 ÷ 10V
Maximum excitation	15V
Zero balance output	$\pm$ 1% fs
Input resistance	400 $\pm$ 25 $\Omega$
Output resistance	350 $\pm$ 2 $\Omega$
Insulation resistance	> 5 G $\Omega$
Combined error	< $\pm$ 0,2% fs
Non repeatability	< $\pm$ 0,2% fs
Temperature effect on zero balance (5°C)	< $\pm$ 0,02% fs
Temperature effect on rated output (5°C)	< $\pm$ 0,02% fs
Compensated temperature range	-10°C ÷ +40°C
Operating temperature range	-15°C ÷ +70°C
Maximum safe load	150% fs
Ultimate load	>200/300% fs
Protection class (EN60529)	IP64
Torque load cell Material	Stainless steel
Safe-keeping Material	Aluminium
Cable lenght	5m - 6 x 0,14 mm <sup>2</sup>

### 5. Connector connections



- 1) + Signal (yellow)
- 2) - Signal (green)
- 3) + Excitation (red+white)
- 4) - Excitation (blue+black)